

USER INSTRUCTION MANUAL

COMPACT **air**

respiratory protection equipment

POWERED AIR PURIFYING RESPIRATOR



- *COMFORTABLE*
- *LIGHTWEIGHT*
- *PORTABLE*
- *POWERFUL*
- *DURABLE*

**Products Which Improve
Quality, Productivity, Safety, & Performance**



WELDING AND SAFETY PRODUCTS
85 Independence Drive, Taunton, MA 02780

Definition of Safety Signal Words per ANSI Z 535.4



Indicates a potentially hazardous situation which, if not avoided, could result in death or serious injury.



Indicates a potentially hazardous situation which, if not avoided, may result in minor or moderate injury. It may also be used to alert against unsafe practices.



Do not use this product until you have read and understood this instruction manual which is an essential part of the COMPACT AIR™ PAPR System.

If the equipment is not properly assembled, connected, and used in strict conformance with this instruction manual, contaminated air could be drawn in the System, resulting in exposure, which may lead to serious bodily injury or loss of life.

Use by unqualified or untrained persons, or use other than in accordance with this instruction manual, is dangerous and could expose you to serious bodily injury or loss of life.

TABLE OF CONTENTS

1.0 General Information

- 1.1 Introduction
- 1.2 Principal of Operation
- 1.3 Respirator Approvals
- 1.4 Helmet Approvals

2.0 System Use and Maintenance

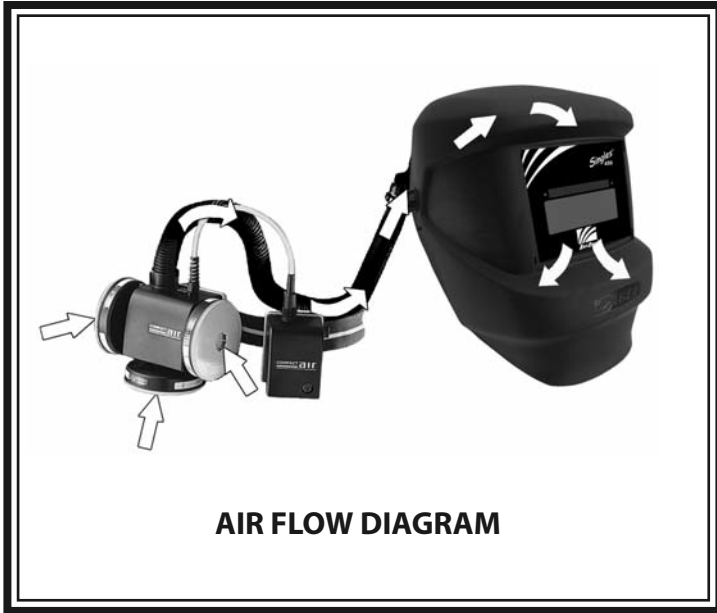
- 2.1 Preparation for Safe Use
- 2.2 Filter Cartridges
- 2.3 Battery Charging
- 2.4 Air Flow Test
- 2.5 Welding Helmet Assembly
- 2.6 Pre-Operational Inspection and Donning
- 2.7 Troubleshooting Guide
- 2.8 Maintenance and Storage

3.0 Component Replacement

- 3.1 Blower Unit Replacement
- 3.2 Fuse Replacement
- 3.3 Face Seal Replacement
- 3.4 Airduct Headgear Assembly Replacement
- 3.5 Breathing Tube Replacement
- 3.6 Auto-Darkening Lens Replacement

4.0 Customer Information

- 4.1 Replacement Parts and Accessories
- 4.2 Technical Specifications
- 4.3 Warranty
- 4.4 Warranty Registration Card
- 4.5 Customer Service
- Appendix I - Respirator Approval Label
- Appendix II - Filter/Cartridge Approval Label



A complete Compact AirTM PAPR System Includes:

- A Choice of Lightweight and Durable Nylon Eagle, Hawk, or Vision Welding Helmet
- A Choice of Auto-Darkening Welding Lens
- Aerodynamic Airduct Headgear with Sweatband
- ComfaSealTM Face Seal (not shown)
- Three HE Particulate Filters or Three HE/OV/SD/CL/HC Cartridges
- Blower Unit
- Airflow Indicator (not shown)
- 4.8V NiCad Battery and Charger (not shown)
- Breathing Tube
- Adjustable Belt
- Carrying Case (not shown)

Available in the following Helmet Styles with a choice of Auto-Darkening

Vision Series Helmets



Singles®

Shade 9,10,11 or 12
5 x 4" Fixed Front or
2 x 4" Fixed Front
2 x 4" Lift Front



Industrial™

Variable Shade
Selections 9-13 & 7-14
5 x 4" and 2x4" Fixed Front

Eagle Series Helmets (4 x 5")



Singles®



Industrial™

Variable Shade
Selections 7-14

Hawk Helmet (2 x 4")



Singles®

Shade



Industrial™



1.0 General Information

1.1 Introduction

Congratulations! You have purchased the ultimate in comfortable welding powered respiratory protection equipment manufactured in the world today. The complete **COMPACT AIR™** Powered Air Purifying Respirator System is offered in three distinct lightweight welding helmets: the Eagle, Hawk and Vision, which include **ArcOne's** family of electronic auto-darkening filters. (Enclosed is **ArcOne's** Auto-Darkening Welding Helmets "User Instruction Manual," please refer to that manual for details on **ArcOne's** welding helmets

The **Compact Air Powered Air Purifying Respirator System** blows a supply of filtered air over the welder's face, creating a protective positive pressure inside the face collar, that keeps out harmful gases, vapors and particulates, and offers additional comfort when working conditions are hot and humid.

Our goal is to make your demanding job comfortable and safe. The **Compact Air PAPR** system is not only engineered for safety and functionality but also for lightweight comfort. You can wear the **Compact Air PAPR** system all day with no worry of fatigue or respiratory stress.

To assure your complete satisfaction with the **Compact Air PAPR** system, we ask that you read these user and safety instructions thoroughly before using the system. **PLEASE**, also take the time to read the Auto-Darkening Welding Helmets-"User Instruction Manual" which is enclosed.

The complete **Compact Air PAPR** System has been engineered for:
TOTAL PROTECTION to the welder - (1) **COMPACT AIR™ POWERED AIR PURIFYING RESPIRATOR** - Filters the air that a welder breaths into his or her lungs. (2) **ARCONE'S AUTO-DARKENING LENS** - Protects the eyes, and prevents against neck injuries (3) **EAGLE, HAWK, and VISION SERIES WELDING HELMETS** - Ergonomically designed to protect the face, head, and neck areas during welding.

1.2 Operating Principals

This **Compact Air PAPR** system is used in a welding environment where protection is required against harmful particles, mist, vapors and gases. The Compact Air PAPR , in conjunction with ArcOne's Auto Darkening Lens and Eagle, Hawk, Vision, and Falcon welding helmets eliminate much of the wasted motion and discomfort associated with welding. You will receive a constant flow of fresh air, which will allow you to comfortably remain safely in your work environment for a longer period of time, and is of particular benefit where working conditions are hot or humid.

The Compact Air blower unit supplies an over capacity of (170 Liters) per minute of filtered air to the welding helmet, and allows the user to breathe without having to overcome the resistance of the filters. Considering that an adult person requires an average of 45 liters of air per minute, the over capacity ensures a slight overpressure and thus a high degree of protection.

The **Compact Air PAPR** system is powered by a rechargeable NiCad battery, which is encased in durable lightweight plastic. A clip is provided for easy and secure attachment to the adjustable belt. The battery provides protection for an 8 hour shift. The battery is delivered in the uncharged state; the charging time for a fully discharged battery is 14 hours. (See Section 2.3 Battery Charging)

The Compact Air blower unit should be fitted with filters appropriate to the application and selected by a competent person with a full knowledge of respiratory hazards, and their concentrations that are applicable in the workplace. To ensure adequate protection, it is essential that the blower unit is correctly configured and that the correct filters are used. (See Section 2.2 Filter Cartridges)



WARNING

If there is any doubt of final determination of respirator applicability and filter selection, it must be made by an on-site safety specialist or industrial hygienist. (or contact the National Institute of Occupational Safety and Health).

1.3 Respirator Approvals

The **Compact Air PAPR System** as described in this instruction manual has been approved by the following agencies

- NIOSH 42 CFR Part 84 (USA)
- CE - EN 146 and EN 147 (Europe)

1.4 Helmet and Auto-Darkening Lens Approvals

The **ArcOne** helmet, consisting of the Eagle, Hawk, Vision, and Falcon series and the full family of **ArcOne's** Auto-Darkening Lenses have been tested and approved under the following Standards Agencies (see specific models for standards that apply):

- ANSI Z87.1 - 1989 (USA)
- CSA Z94.3-M88 (Canada)
- CE - EN 374/EN 175 (Europe)

2.0 System Use and Maintenance

2.1 Preparations for Safe Use

Before using the **Compact Air PAPR System**, you should ensure that all conditions for safe use have been satisfied.

- The space in which the **Compact Air PAPR** system is to be used must contain at least 19.5% oxygen and must not contain any explosive gases or vapors. In enclosed spaces where there is a risk of oxygen deficiency, use of the **Compact Air** system should be avoided.
- Check before use that the free flow of air is not obstructed by blocked filters or other causes.
- Check that the correct filter cartridges have been selected.
- Check that the **Compact Air PAPR** system is working properly by means of the flow meter supplied. (See Section 2.4 Air Flow Test)

2.2 Filters/Cartridges

Before connecting the filter to your Compact Air PAPR System, read the NIOSH approval labels found enclosed with the filter/cartridges.

Different types of filter cartridges must be used according to the nature of the particular hazardous substances to be encountered. (SEE BELOW)

FILTER MEDIA:

HE - High Efficiency Particulate Air Filter for Powered Air Purifying Respirators - time use restrictions apply.

Approved for respiratory protection against Particulate Aerosols.

NOTE: HE FILTERS SHOULD NEVER BE WORN FOR PROTECTION AGAINST GASES OR VAPORS. REFER TO SPECIFIC NIOSH FILTER APPROVAL LABELS FOR SPECIFIC INFORMATION ON USAGE AND LIMITATIONS.

HE/OV/CL/HC/SD - Combination Cartridges

Approved for respiratory protection against Chlorine or Hydrogen Chloride or Sulfur Dioxide or Organic Vapors and /or Particulate Aerosols.

NOTE: REFER TO SPECIFIC NIOSH CARTRIDGE APPROVAL LABELS FOR SPECIFIC INFORMATION ON USAGE AND LIMITATIONS.

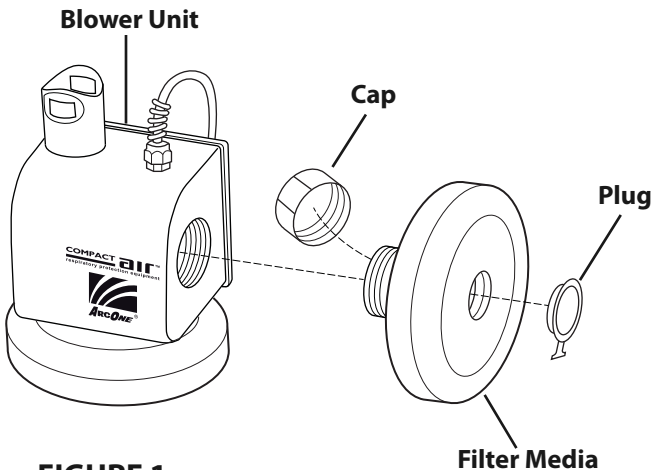
- Always fit three (3) identical cartridges to ensure an evenly distributed airflow. A different or older type of cartridge may “Break Through” sooner rendering the filter action of the **Compact Air System Totally Ineffective.**
- Used filter cartridges **CANNOT** be cleaned.
- **ALWAYS** replace filter cartridges with new ones, if in doubt.



WARNING

DO NOT overtighten the filter cartridge. Overtightening could result in distortion or displacement of the seal allowing contaminated air into the system, resulting in serious bodily injury or loss of life.

- Remove the screw caps from each of the filter cartridges and retain them in a safe place for later use. Ensure that the filter cartridge threads are clean. Check to make sure that there is a rubber O-Ring inserted into each inlet before screwing the filter loosely into each of the three inlets. When all three filters are in place, hand tighten them so that an airtight seal is achieved between the neck of each of the filter cartridge and the threaded sockets of the blower unit.
- A plastic plug (depending on the type of filter cartridge used) is supplied with each filter cartridge. Ensure that the plug is removed before using the system. (See Figure 1). Keep the plugs in a safe place for later use.



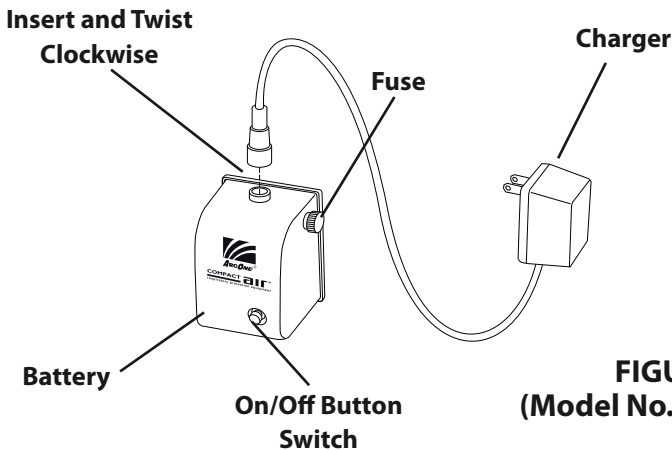
2.3 Battery Charging

Battery Models with Fuse, Model No. CA-BAT-01 (Fig.2)

1. Discharge the **Battery** (if not discharged):
 - A) Connect **Battery** to blower unit.
 - B) Press the **On/Off Button Switch** to turn off the **Battery**.
 - C) Wait until blower fan stops.
2. Connect the **Battery** to the **Charger** by plugging the **Charger Lead** into the top of the Battery. Gently twist the connector clockwise to lock into place.
3. Unscrew the Fuse Cap and ensure the fuse is present and the fuse link inside the fuse is not broken. Replace if the fuse link is broken.
4. Plug the **Charger** into 110-120 Volts AC outlet.
5. Charge the **Battery** for 14 hours, only.

Attention

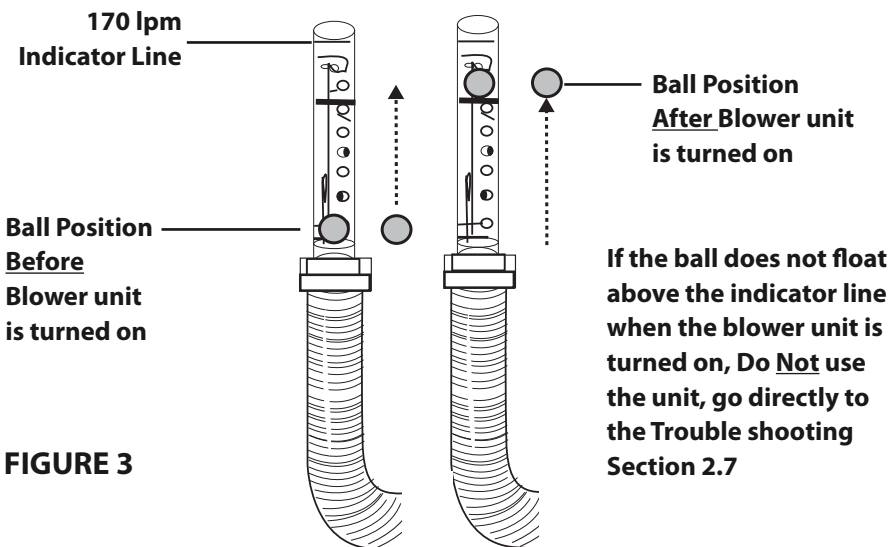
Do not charge the Battery for more than 14 hours; doing so will damage the battery. Partial discharge and recharge will shorten battery life.



2.4 Air Flow Test

In order to assure that the **Compact Air PAPR** is operating properly the following Operational Inspection should be performed with the provided flow meter.

- If any components are missing or damaged, replace them prior to using the **Compact Air PAPR** system. Ensure that the filter cartridges are fitted properly into the blower unit.
- Confirm that the battery is fully charged (See Section 2.3), the power lead from the blower unit is plugged into the battery, and the plastic plug has been removed from all the filters. Check the blower unit and filter airflow as follows:
- At the end of the breathing tube, (the end of the breathing tube that is connected to the welding helmet) insert the base of the airflow indicator vertically into the breathing tube.
- Turn the battery **ON** and ensure that the ball floats above the minimum level of the indicator line. (170 liters per minute)
- **NOTE:** If the airflow indicator float test fails, install new filter cartridges and dispose of the inefficient filter cartridges in accordance with state, local and federal ordinances. If the problem still exists, refer to the section for additional troubleshooting suggestions. (See Section 2.7)
- After confirming adequate airflow, you will be ready to attach the **Compact Air PAPR** system to the welding helmet. (See Section 2.5)



2.5 Welding Helmet Assembly

Your **ArcOne** welding helmet comes completely assembled, before you begin to use the **Compact Air PAPR** system it is **important** that you read ArcOne's Auto Darkening Welding Helmet "**User Instruction Manual**" which is enclosed.

Ensure that the auto-darkening lens you have selected is the adequate shade for your welding application. Always use an outside protection plate for the lens.

- Connect the breathing tube to the airduct on the back of the welding helmet, making sure that the rubber O-Ring around the end of the breathing tube is in place and not damaged or deteriorated.
- The headgear is easily adjusted by means of a knob located at the back. All adjustments can be performed as you wear your welding helmet.

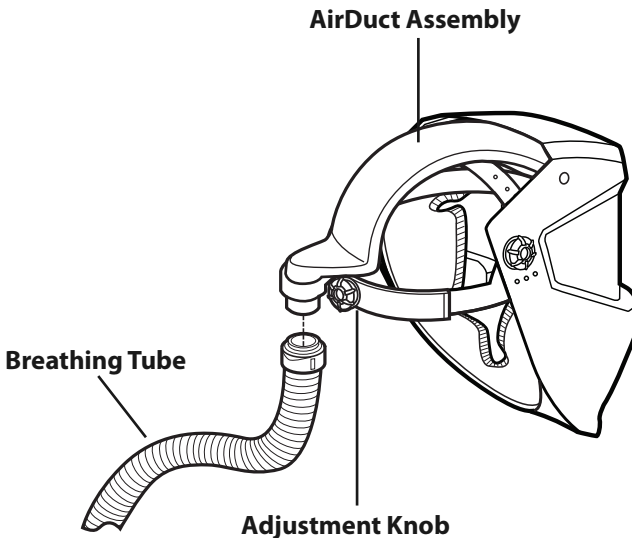


FIGURE 4

2.6 Pre-Operational Inspection and Donning

Check that the auto-darkening lens is the recommended shade for your application. Refer to ANSI/AWS F2.2-89, BS 679 or EN 169.

- Insure that the **ShadeMaster** Auto-Darkening lens is properly installed and operational (Refer to the enclosed **ShadeMaster Auto-Darkening Welding Helmets-“User Instruction Manual”**).
- Check that the Face Seal is properly installed and in good condition with no holes, runs, or tears. (See Section 3.3)
- With the breathing tube connected to the helmet assembly, turn on the blower unit and confirm the airflow through the system and into the helmet assembly breathing zone.
- Secure the Blower Unit and Battery to your body utilizing the Waistbelt.
- Donn the Helmet Assembly to your head fitting the Face Seal under the chin and around the face. The Face Seal can be worn either in front of, or behind the ears.
- The headgear has both crown (height) and circumference adjustments. Adjust crown height via the pin/hole adjustment on the top strap of the headgear. The circumference is easily adjusted by means of a knob located at the back, this adjustment can be performed as you wear your welding helmet.



WARNING

Failure to properly connect the Breathing Tube to the Helmet Assembly and to confirm airflow through the system to the Breathing Zone could lead to contaminant exposure resulting in serious bodily injury or loss of life.

2.7 Troubleshooting Guide

In the event the airflow over the face reduces or fails entirely, leave the work area immediately.

Blower Unit Fails to Supply Air:

- Battery is discharged
- Switch is in "OFF" position
- Switch is defective
- Power lead or plug connection is defective
- Motor bearings are defective
- Plugs not removed from cartridges

Blower Unit Supplies Insufficient Air:

- Battery insufficiently charged
- Filter cartridge blocked
- Breathing Tube blocked or leaking
- Blockage or leakage in airduct assembly
- Not all plugs removed on filter cartridges

Battery Fails to Charge:

- Defective fuse
- Power lead or plug connection defective
- Defective charger
- Battery is defective or worn out



WARNING

If, at any time during operation, you detect an odor or taste of gas or vapor, or If you feel eye or throat irritation, you must leave the contaminated environment immediately, and go back to the Trouble Shooting Guide. If necessary, replace all filter cartridges as instructed in Section 2.2. Failure to go back to the Troubleshooting Guide if the user detects an odor or taste of gas, vapor, feels eye or throat irritation could lead to contaminant exposure resulting in serious bodily injury or loss of life.

2.8 Maintenance and Storage

2.8.1 Cleaning

- The external surfaces of the **Compact Air PAPP** system and the battery pack should be cleaned with a soft dampened cloth in a mild solution of clean water and mild detergent. Abrasive cleaners should never be used. During cleaning, ensure that no water is allowed to enter into the blower unit or battery pack, this could damage the blower unit's internal parts. The unit should never be immersed in any type of liquid.
- Detach the breathing tube from the blower unit and the helmet assembly, and wipe the connection sites. During cleaning, make sure the seal ring has not deteriorated, this can happen due to extensive use and natural aging of the of the O-Rings. When in doubt, replace the O-Rings. Please call Customer Service for a replacement hose.
- Check the breathing tube for any holes or splitting. When in doubt, replace the breathing tube. **Never** patch the breathing tube.
- Detach the face seal from the helmet assembly before cleaning. Hand wash in a mild solution of clean water and mild detergent. During cleaning ensure that the face seal has not lost its elasticity and that there are no tears or holes. Allow the face seal to air dry before attaching it back into the helmet assembly.
- For helmet maintenance refer to Section III, **the Auto-Darkening Welding Helmets- "User Instruction Manual" which is enclosed.**
- For all *ArcOne* Auto-Darkening lenses refer to Section III, **Auto-Darkening Welding Helmets- "User Instruction Manual" which is enclosed.**

**WARNING**

Do not allow water to enter into the blower unit or the battery pack. Failure to prevent water from entering into the blower unit or battery pack could cause the product to fail, leading to contaminant exposure resulting in serious bodily injury or loss of life. Any filter cartridge, which has been directly exposed to water, must be disposed of in accordance with state, local and federal ordinances.

Do not clean any part of the system with gasoline, organic based solvents or chlorinated degreasing fluids (such as trichloroethylene). Failure to prevent cleaning with any of these substances could lead to contaminant exposure and/or product failure resulting in serious injury or loss of life.

2.8.2 Inspection

- After cleaning the system, inspect the individual parts and ensure that all components and connection sites are clean and in good condition.
- If the system will not be used again for several days, the filter cartridges must be removed and disposed of in accordance with local, State and Federal Ordinances.
- If the system will be used the following day, the filter cartridges may remain on the blower unit with covers/plugs securing exposed openings.
- Examine the parts of the system and replace any damaged components before using the system again.
- After cleaning and inspecting the system, allow all components to dry away from direct heat.


2.8.3 Maintenance Record Keeping

All components should be checked daily when used regularly. Regardless of usage, each unit requires a documented monthly inspection of all aspects relating to safety. A trained and competent person with full knowledge of respiratory equipment should carry this out. Records should be maintained throughout the life of the equipment.

Example of Record

DATE	AUTO LENS	HELMET	FACE COLLAR	BREATHING TUBE	SEALS	FLOW RATE	BATTERY	BATTERY CHARGER	INITIAL

***THIS IS ONLY AN EXAMPLE - Regulatory Guidance can be found in the following documents: OSHA 29 CFR 1910 Part 134 and ANSI Z88.2**



WARNING

Do Not Allow contaminants to enter into the breathing tube or blower unit. Failure to prevent contaminants from entering into the breathing tube or blower unit could lead to contaminant exposure resulting in serious bodily injury or loss of life. Consult your local safety professional in the event contaminant entry in the breathing tube of the blower unit is suspected.

2.8.4 Storage

- Before storing the **Compact Air PAPR** system, it should be thoroughly dry. **Do Not Keep** used filter cartridges in the same enclosed storage space as new cartridges.
- Store the system in a clean area, away from moisture, heat and direct sunlight. Storage temperatures should not exceed 120°F.

3.0 Component Replacement

3.1 Blower Unit Replacement

Note: The blower unit, battery, and battery charger are not user serviceable. Maintenance or replacement parts of should only be performed by ArcOne, who has the necessary test equipment to ensure that all repairs are completed safely and recertified.



3.2 Fuse Replacement

The fuse for the battery is located on the right side of the battery case. The fuse is contained within the fuse cap holder, unscrew the cap holder for access to the fuse. Pull the fuse cap holder and its fuse from the case. Replace the fuse with a 1.6 amp fuse, and screw the fuse holder back into the battery. (See Figure 5).

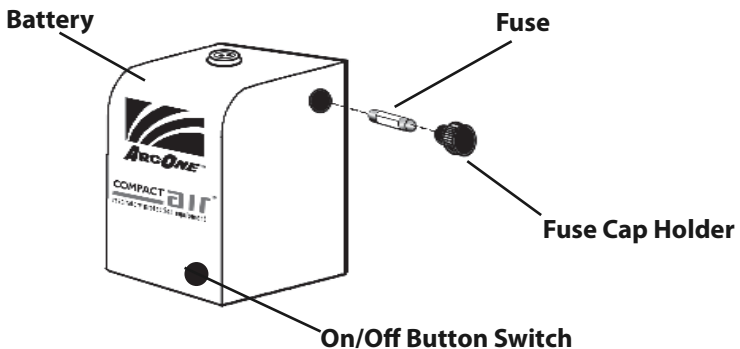


FIGURE 5

3.3 Face Seal Replacement

1. First remove the Ratchet Headgear Airduct Assembly by unscrewing the thumbnuts on both sides of the helmet.
2. Remove the face seal by gently pulling the face seal free from the rivets on both sides of the helmet.
3. The new face seal has double-sided tape on each side of the face seal, the tape is there to aid you in the placement of the new face seal. Remove the strip cover on the double-sided tape.
4. Line up the square cut out in the face seal with the square cut out in the inside of the helmet. When you have the square cut outs lined up, press the tape to the inside of the helmet; this will hold the face seal in place.
5. Line up the air duct headgear with the square cut out in the face seal with the inside of the helmet, while you screw the parts back in place. (See Figure 6).
6. Install the face seal by lining up the holes in the plastic portion of the face seal with the (3) three rivets installed in the helmet. One on each side of the helmet and one in the chin area. Line each hole and push the holes into the rivets.
7. Line up the air duct headgear with the square cut out in the face seal with the inside of the helmet, while you screw the parts back in place. (See Figure 6).

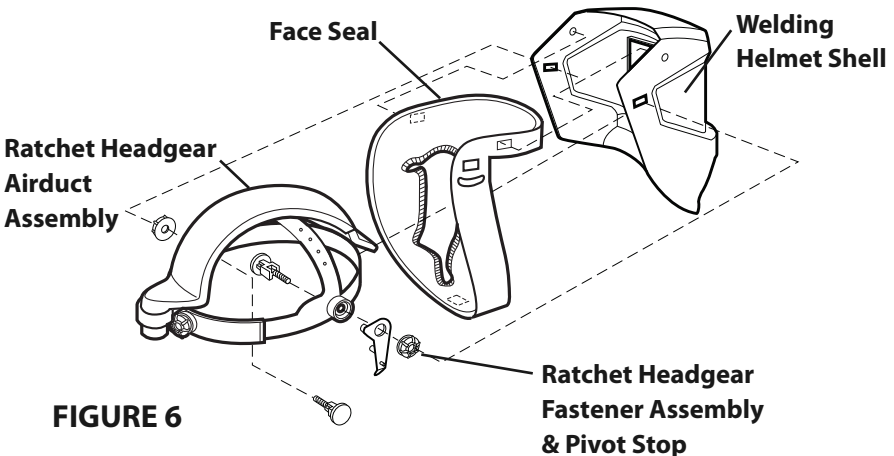


FIGURE 6

3.4 Airduct Headgear Assembly Replacement

- Remove the airduct headgear assembly by unscrewing the thumbnuts on both sides of the helmet. Be sure to retain all hardware.
- Install the new airduct headgear assembly (See Figure 7).

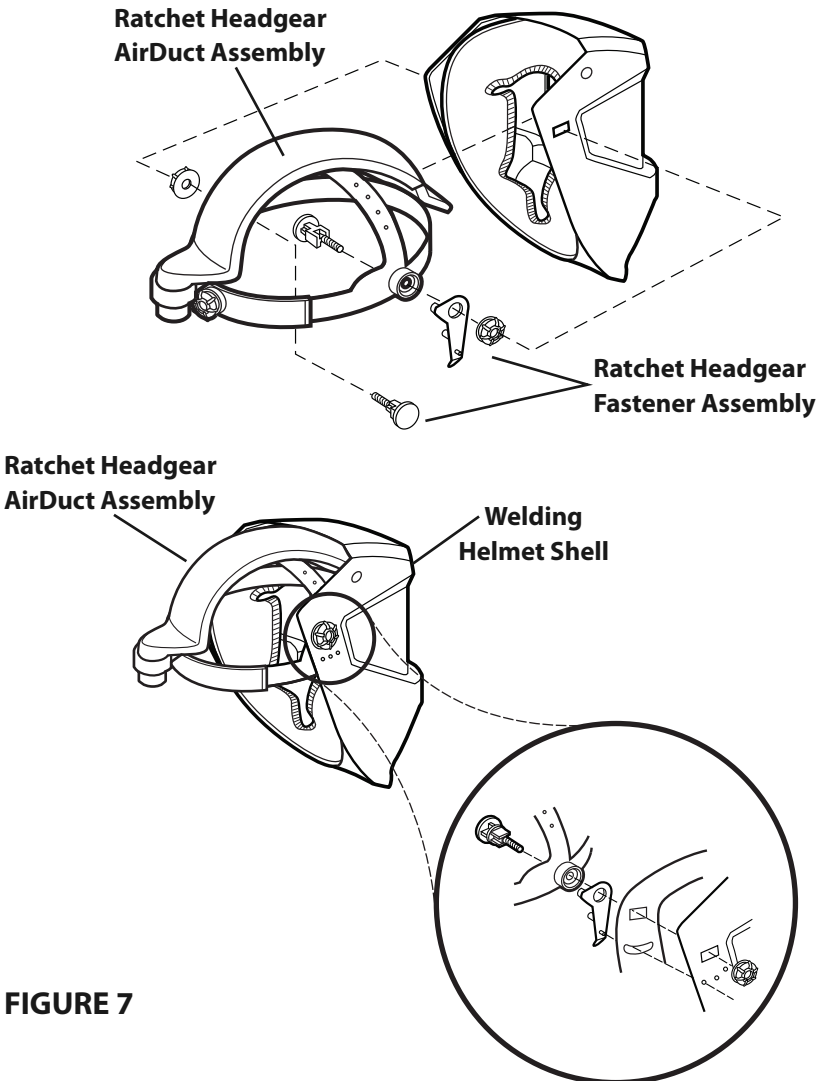


FIGURE 7

3.5 Breathing Tube Replacement

Quick Disconnect Style (Part #: CA-BTC-01-2)

- Remove the Breathing Tube from the Blower Unit by pressing on both sides of the plastic cover on the blower unit.
- Insert the new Breathing Tube, making sure the tabs of the Breathing Tube end connector snap into the connection on the blower unit (See Figure 8).

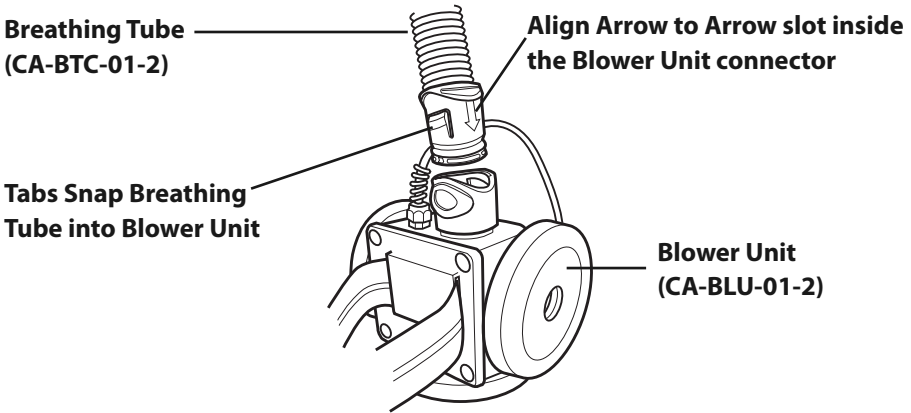


FIGURE 8

3.6 Auto-Darkening Lens Replacement

Refer to *ArcOne's Auto-Darkening Welding Helmets- "User Instruction Manual"* for information on the following:

- Lens mounting
- Protection plate replacement

4.0 Customer Information

4.1 Replacement Parts and Accessories

When ordering replacement parts or accessories, use the part numbers and descriptions listed below. Failure to use only **COMPACT AIR PAPER** parts and accessories will void the **NIOSH Approval** and *ArcOne's* warranty and may expose the user to the risk of serious bodily injury or loss of life. *ArcOne* is not responsible for system performance if components other than **COMPACT AIR PAPER** parts are used to repair or refurbish the equipment.

4.1.1 Replacement Filter Cartridges:

Part No.	Description
CA-680-P3-6	HE HEPA Filter Cartridge (Set of 6)
CA-680-P3-12	HE HEPA Filter Cartridge (Set of 12)
CA-AEP3-6	HE/OV/CL/HC/SD Cartridge (Set of 6)
CA-AEP3-12	HE/OV/CL/HC/SD Cartridge (Set of 12)

4.1.2 Blower Unit System Replacement Parts:

Part No.	Description
CA-BLU-01-2	Blower Unit with Quick Disconnect Fitting
CA-SER-01	Seal Rings for Blower Unit (3 per)
CA-BAT-01	Battery (4.8V) w/fuse and fuse holder
CA-FUS-01	Fuse
CA-FUH-01	Fuse Holder
CA-AFI-01	Air Flow Indicator for Bayonet Connector
CA-WBT-01	Waistbelt
CA-BTC-01-2	Breathing Tube with Bayonet Connector and Quick Disconnect
CA-CAC-02	Carrying Case
CA-BCH-01	Battery Charger

4.1.3 Helmet Assembly:

Part No.	Description
CA-HGA-01	Ratchet Headgear - AirDuct Assembly
01-HGA	Ratchet Headgear Fastener Assembly & Pivot Stop
CA-HGS-01	Headgear Sweatband
SS2-KA	Shade Adjustment Knob
CA-COL-02	Face Seal, Eagle
CA-COL-03	Face Seal, Hawk
CA-COL-05	Face Seal, Vision

See ArcOne's User Instruction Manual for Auto-Darkening Lenses and Welding Helmets for specific replacement parts that are not covered in this manual

4.2 Technical Specifications

Compact Air PAPR System

Blower Unit

Type:	One-stage centrifugal
Rotor Speed:	10,000 rpm/min
Rotor:	Balanced
Air Supply:	6 cubic feet (170 liters) per /min
Case:	Impact-proof ABS
Belt Plate:	Fiber Glass reinforced polyamide
Filter Cartridge:	3 x EN 148 threaded connection
Hose Length:	29,5 in/750mm
Hose Diameter (int):	.87 in/22mm
Hose Connection:	Bayonet Connection
Weight:	1.4 lbs. (.62 kg.)
Dimensions:	L- 105mm x W-85mm x 100mm
Color:	Black/Yellow

Battery

Type:	NiCad rechargeable
Voltage:	4.8 Volt
Fuse:	1.6 Amp
Operating Time:	8 hour shift from fully charged battery
Charging Time:	Standard Overnight Charge (14 hours)
Charging Cycles:	500 Times
Housing: Impact-proof	ABS
Belt Plate:	Fiber Glass reinforced polyamide
Weight: 1	.5 lbs. (.7kg.)
Dimensions:	L- 4" x W - 3.1" x H - 2.8" L- 100mm x W - 80mm x 70mm
Color:	Black/Yellow

Charger

Type:	DC Rectifier
Primary Voltage:	120 V/60Hz
Secondary Voltage:	5.8 VDC
Output Current:	570mA
Weight:	.5 lb (.23 kg.)
Dimensions:	L- 2.7" x W- 2.2" x H- 1.6" L- 96mm x W- 55mm x 40mm
Color:	Black
Approvals:	UL/CSA

4.2 Technical Specifications Cont.

Welding Helmet

Eagle , Hawk, & Vision

Material:	Nylon Heat Resistant, Abrasion & Chemical Resistant
Weight:	Less than 1lb.
Style:	Vision (5x4, 2x4 & 2x4 lift visual opening) vertical mount Eagle (4x5 visual opening) horizontal mount Hawk (2x4 visual opening)
Colors:	Black and various decals

Auto-Darkening Lens

Types:	Single Shade, Variable Shade Manual Adjust, Automatic Adjust
Sizes:	41/2" x 51/4" x 1/7" Horizontal 51/4" x 41/2" x 1/7" Vertical 2" x 41/4" x 1/7"
Shade:	UV/IR Protection to Shade 14
Switching Time:	.5 mil seconds or less
Power:	Solar Cell-no need for batteries
Approvals:	ANSI Z87.1 -American National Standard for Eye & Face Protection CSA Z94.3 - National Standard of Canada for Industrial Eye and Face Protection (Specific models only) CE EN 379 - European Standard for Auto-Darkening Filters

See ArcOne's User Instruction Manual for Auto Darkening Helmets for Helmet and Lens Replacement Parts.

Note: NIOSH Approval covers complete respirator systems only, as configured from approved components as referenced on the NIOSH approval label for this system(s).



4.3 Warranty

ArcOne warrants the complete **Compact Air PAPR Systems** for one (1) year from the date of purchase against all manufacturing defects resulting from materials or workmanship. Proof of purchase establishing the sale date of the respiratory system must be provided, should a warranty claim be submitted. The purchaser's only remedy under this limited warranty shall be limited to **ArcOne's** sole option to repair, replace or refund (not to exceed the purchase price). This limited warranty is void in the case of unauthorized modification, tampering, and damage due to misuse, abuse, inadequate maintenance or improper storage. This limited warranty is not transferable from the original purchaser to a secondary owner. **ArcOne** shall in no event be liable or responsible from the use or misuse of this product. This limited warranty is exclusive and is in lieu of any other warranty implied, either oral or written. Please read the instruction manual carefully to avoid certain situations which may void this limited warranty.

4.4 Warranty Registration Card

ArcOne provides you with a Warranty Registration Card, which should be filled out as soon as you unpack the product. Please note that the warranty card is for the complete system which includes the **Compact Air PAPR** and attached welding helmet and auto-darkening lens.

4.5 Customer Service

Should you have any questions concerning the use or performance of the **Compact Air PAPER System**; please contact our Customer Service Department during normal business hours (8:00 A.M. to 5:00 P.M. EST) at 1-800-223-4685. Our Customer Service representatives are always available to assist you.

4.6 Servicing Your Compact Air™ PAPER System

Please contact **ArcOne** directly for any questions regarding the function of your **Compact Air PAPER System**.

- All **Warranty** repairs are covered by warranty for the balance of the original warranty period.
- All **Non-Warranty** repairs carry a 90-Day, limited warranty.

Do Not return your **ArcOne Compact Air PAPER System** to your Distributor.

**Call
ArcOne Service Center**

**(800-223-4685)
MONDAY - FRIDAY
8:00 A.M. - 5:00 P.M. E.S.T.**

Or

**Visit Our Website
www.arc1weldsafe.com**

Please Contact
ARCONE Service Center,
Tel: 800-223-4685, Fax: 508-884-9666

Or

Visit Our Website
www.arc1weldsafe.com



A Division of A.C.E. International Company, Incorporated
85 Independence Drive, Taunton, MA 02780
TEL: (508) 884-9600 • TOLL FREE: (800) 223-4685 • FAX: (508) 884-9666